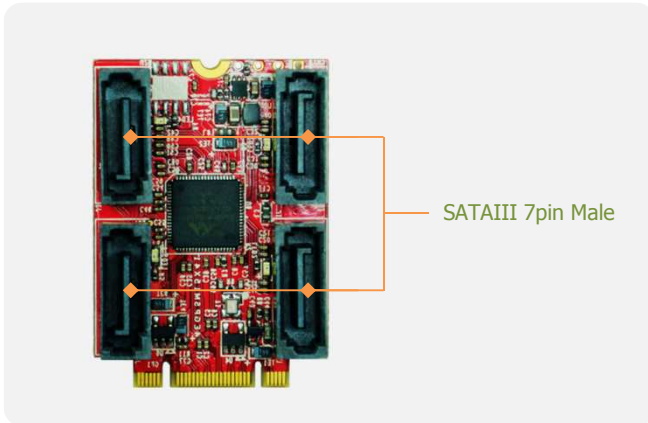


EGPS-3401

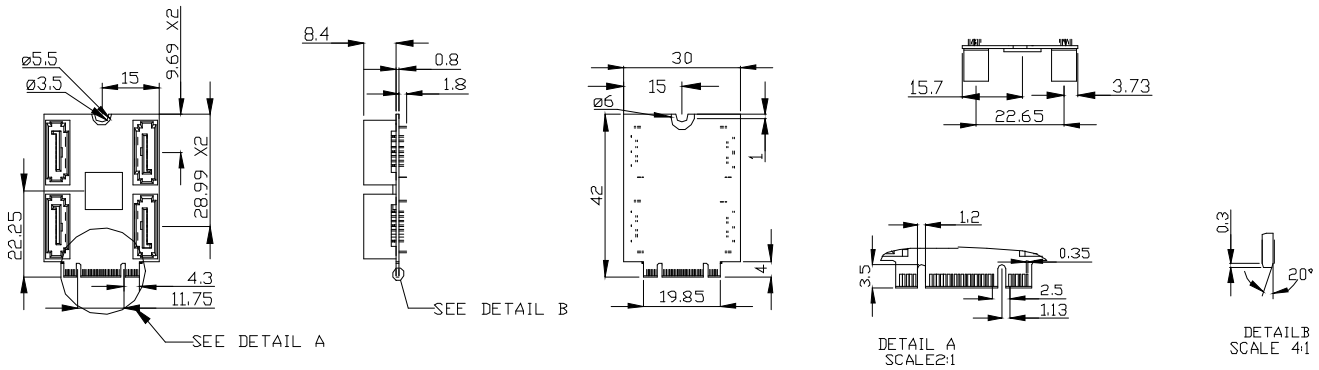
M.2 3042 to four SATA III Module



Features

- PCI Express 2.0 to four SATA III ports.
- Supports AHCI, Port-Multiplier.
- Supports Native Command Queuing
- Supports error reporting, recovery and correction.
- 30μ golden finger, 3 years warranty.
- Industrial design, manufactured in innodisk Taiwan

Mechanical Drawing



Specifications

Headquarters (Taiwan)
 5F., No. 237, Sec. 1, Datong Rd.,
 Xizhi Dist., New Taipei City 221,
 Taiwan
 Tel: +886-2-77033000
 Email: sales@innodisk.com

Branch Offices:
USA
usasales@innodisk.com
 +1-510-770-9421

Europe
eusales@innodisk.com
 +31-040-282-1818

Japan
jpsales@innodisk.com
 +81-45-594-7581

China
sales_cn@innodisk.com
 +86-755-21673689

www.innodisk.com

© 2014 Innodisk Corporation.
 All right reserved. Specifications
 are subject to change without
 prior notice.

May 22, 2015

Form-Factor	M.2 3042-B-M
Input I/F	PCI Express 2.0
Output I/F	SATA III
Output Connector	SATA 7pin x 4
Bridge	Marvell 88SE9215
TDP	2.74W (3.3V x 830mA)
Dimension (WxLxH)	30 x 42 x 11 mm, Weight: 7.5g
Temperature	Operation: STD: 0°C ~ +70°C Storage: -55°C ~ +95°C
Environment	Vibration: 5G @7~2000Hz, Shock: 50G @ 0.5ms
Notes	

Order Information

EGPS-3401-C1
 M.2 to four SATA III Module

Distributed by:



www.texim-europe.com